

**HUMAN-SHB(Y268) Antibody**  
**Purified Rabbit Polyclonal Antibody (Pab)**  
**Catalog # AP20620a****Specification**

---

**HUMAN-SHB(Y268) Antibody - Product Information**

Application	IHC-P, FC, WB,E
Primary Accession	<a href="#">Q15464</a>
Reactivity	Human
Host	Rabbit
Clonality	Polyclonal
Isotype	Rabbit IgG

**HUMAN-SHB(Y268) Antibody - Additional Information****Gene ID** 6461**Other Names**

SH2 domain-containing adapter protein B, SHB

**Target/Specificity**

This antibody is generated from a rabbit immunized with a KLH conjugated synthetic peptide between 250-290 amino acids from human.

**Dilution**

IHC-P~~1:25

FC~~1:25

WB~~1:1000

E~~Use at an assay dependent concentration.

**Format**

Purified polyclonal antibody supplied in PBS with 0.09% (W/V) sodium azide. This antibody is purified through a protein A column, followed by peptide affinity purification.

**Storage**

Maintain refrigerated at 2-8°C for up to 2 weeks. For long term storage store at -20°C in small aliquots to prevent freeze-thaw cycles.

**Precautions**

HUMAN-SHB(Y268) Antibody is for research use only and not for use in diagnostic or therapeutic procedures.

**HUMAN-SHB(Y268) Antibody - Protein Information****Name** SHB

**Function** Adapter protein which regulates several signal transduction cascades by linking activated receptors to downstream signaling components. May play a role in angiogenesis by

regulating FGFR1, VEGFR2 and PDGFR signaling. May also play a role in T-cell antigen receptor/TCR signaling, interleukin-2 signaling, apoptosis and neuronal cells differentiation by mediating basic-FGF and NGF-induced signaling cascades. May also regulate IRS1 and IRS2 signaling in insulin- producing cells.

#### Cellular Location

Cytoplasm. Cell membrane; Peripheral membrane protein; Cytoplasmic side. Note=Associates with membrane lipid rafts upon TCR stimulation

#### Tissue Location

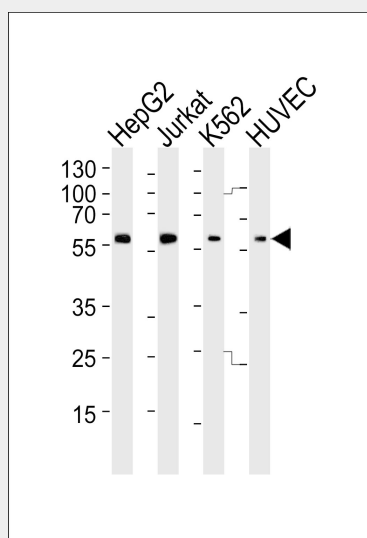
Widely expressed..

### HUMAN-SHB(Y268) Antibody - Protocols

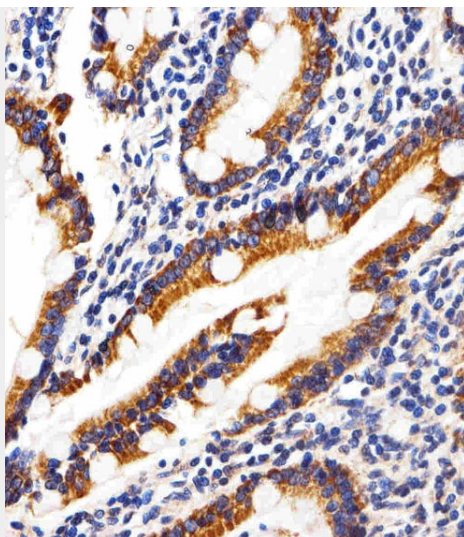
Provided below are standard protocols that you may find useful for product applications.

- [Western Blot](#)
- [Blocking Peptides](#)
- [Dot Blot](#)
- [Immunohistochemistry](#)
- [Immunofluorescence](#)
- [Immunoprecipitation](#)
- [Flow Cytometry](#)
- [Cell Culture](#)

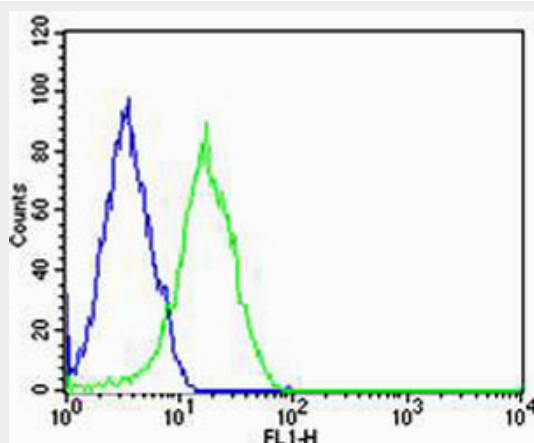
### HUMAN-SHB(Y268) Antibody - Images



Western blot analysis of lysates from HepG2, Jurkat, K562, HUVEC cell line (from left to right), using SHB-Y268 Antibody(Cat. #AP20620a). AP20620a was diluted at 1:1000 at each lane. A goat anti-rabbit IgG H&L(HRP) at 1:5000 dilution was used as the secondary antibody. Lysates at 35ug per lane.



Immunohistochemical analysis of paraffin-embedded H. small intestine section using Phospho-HUMAN-SHB(Y268). ctrl(Cat#AP20620a). AP20620a was diluted at 1:25 dilution. A peroxidase-conjugated goat anti-rabbit IgG at 1:400 dilution was used as the secondary antibody, followed by DAB staining.



Flow cytometric analysis of HepG2 cells using Phospho-HUMAN-SHB(Y268). ctrl(green, Cat#AP20620a) compared to an isotype control of rabbit IgG(blue). AP20620a was diluted at 1:25 dilution. An Alexa Fluor® 488 goat anti-rabbit IgG at 1:400 dilution was used as the secondary antibody.

### **HUMAN-SHB(Y268) Antibody - Background**

Adapter protein which regulates several signal transduction cascades by linking activated receptors to downstream signaling components. May play a role in angiogenesis by regulating FGFR1, VEGFR2 and PDGFR signaling. May also play a role in T-cell antigen receptor/TCR signaling, interleukin-2 signaling, apoptosis and neuronal cells differentiation by mediating basic- FGF and NGF-induced signaling cascades. May also regulate IRS1 and IRS2 signaling in insulin-producing cells.

### **HUMAN-SHB(Y268) Antibody - References**

Welsh M.,et al.Oncogene 9:19-27(1994).  
Humphray S.J.,et al.Nature 429:369-374(2004).  
Mural R.J.,et al.Submitted (SEP-2005) to the EMBL/GenBank/DDBJ databases.  
Karlsson T.,et al.Oncogene 10:1475-1483(1995).

Karlsson T., et al. Oncogene 13:955-961(1996).